

**THE SIXTH FORM (2016-2017)**  
*(A Guide for Students and Parents)*

**CONTENTS**

SIXTH FORM ADMISSION	PAGE	1
THE SIXTH FORM TEAM	PAGE	2
ADVANCED WELSH BACCALAUREATE	PAGE	3
SUBJECT INFORMATION	PAGE	5
PERSONAL DEVELOPMENT & WELL BEING	PAGE	39
UCAS & PLANNING YOUR FUTURE	PAGE	40
TRANSITION FROM YEAR 11 INTO 12	PAGE	41
KEY DATES FOR 2016/2017	PAGE	42



## Sixth Form Admission

At Llanishen High School we aim to provide a broad range of subject choices and have varied subject entry requirements in order to ensure success at AS and A Level or equivalent. Students applying for the Sixth Form should have achieved a high degree of success in the GCSE or BTEC (Level 2) subjects taken.

The minimum requirement is that all students achieve 5 A\* - C grades in order to study at AS Level. Ideally this should include GCSE Maths and English Language.

We have put together the following guidelines to help advise students on the number of AS Levels to undertake according to their GCSE achievements.

Number of GCSE's obtained	Number of AS Levels Advised	Continued study at A Level
8 + A* - C	4 + WBQ	4 or 3 + WBQ
6 - 8 A* - C	3 + WBQ	3 WBQ
5 A* - C	2 + WBQ	2 + WBQ
BTEC Level 2 + 3x C Grades at GCSE	BTEC Level 3 + WBQ	BTEC + WBQ

NB. Students achieving above the required level to study BTEC may study a BTEC subject plus an additional AS Level subject/s.

Most students undertake **four** AS subjects or the equivalent in Year 12, alongside the Welsh Baccalaureate, which is compulsory for all students. It is expected that students will reduce to **three** A Level subjects in Year 13. Each student will be considered on an individual basis.

Continuing a subject at A2 Level: students must have gained 2 or more passes (Grade A\*-E) at AS Level in order to continue onto Year 13. For BTEC subjects all completed unit assignments must have been submitted by the set deadline in order to continue with the remaining units in Year 13. Completion of all Welsh Baccalaureate work is also a pre-requisite for continuation into Year 13.

### **IMPORTANT POINTS TO NOTE:**

- Students with a Grade C at GCSE will generally be admitted to an AS level course, some subjects require a minimum of a B grade to cope with the demands of the course – please refer to individual subject information sheet.
- Where new subjects are introduced (e.g. Economics, Psychology, Politics, Sociology) achievement in other relevant curriculum areas will be considered for course entry. Please see subject information sheet.

### **MATHEMATICS & ENGLISH GCSE**

- A minimum of a C grade is required in Maths and English language.
- If students have not achieved this standard they **MUST** re-sit either/both subjects in the November of Year 12 and are required to attend all timetabled re-sit lessons.
- Failure to meet these requirements will result in withdrawal from the Sixth Form.

# **The Sixth Form Team**

## **Leader of Learning 16-19**

Mrs E Lloyd

## **Assistant Year Team Leaders**

Mr M Adey (Year 12) & Mrs A Hornblow (Year 13)

## **Welsh Baccalaureate Coordinator**

Mrs A Hornblow

## **Sixth Form Administrator**

Mrs J Jones

## **Sixth Form Learning Tutors**

<b>YEAR 12</b>	<b>YEAR 13</b>
Mrs N Baker	Mr T Charles
Mr I Beck	Mr G Clements
Mrs D Birch-Hurst	Mr J Cobb
Mr D Griffin	Mrs J Dalzell
Mrs J Harry	Mrs H Davies
Mrs E Hazeltine-Rees/Mrs A James	Mr P Edwards
Mrs R Jenkins	Mrs R Lloyd-Davies
Mrs L Leon	Mr J Pontin
Mr M Lewis	Mrs H Sweet-Jones
Mr R Lloyd	

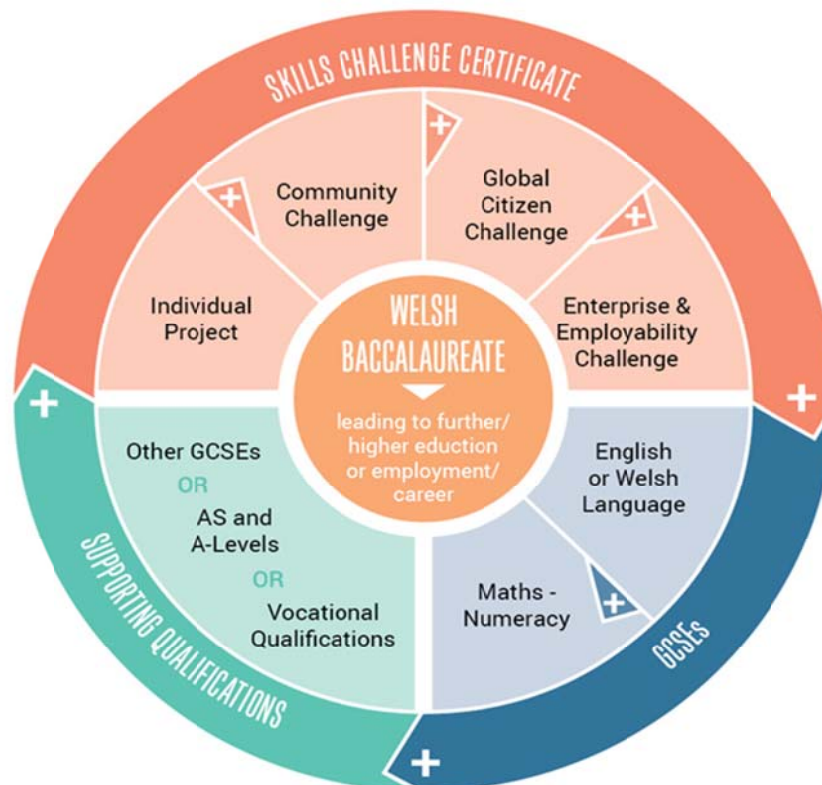
# Welsh Baccalaureate Qualification (WBQ)

## Level 3 – Advanced Level

It is compulsory for all students entering the Sixth Form at Llanishen High School to study the Advanced Level Welsh Baccalaureate Qualification (WBQ) during both Year 12 and Year 13. It now sits in the heart of the Welsh qualifications system.

### The Qualification

The Welsh Baccalaureate Qualification consists of:



All students will have their own **Learning Coach** who will help keep them organised and who will interview them for 30 minutes every half term to discuss progress in all aspects of their study and any issues they may have.

Together, this makes up the **Welsh Baccalaureate Advanced Level Qualification**.

### ***How long will it take?***

That depends on the students. If all work is submitted by the set deadlines set then students can complete the qualification by Christmas of Year 13. Students who fall behind will be closely monitored and given an additional half term to complete the work.

The Core aspect of the course will be completed in up to 4 1 hour lessons per week with an expectation of work to also be completed outside of lessons.

### **How will it be assessed?**

There are no exams for the WBQ but the portfolios from each component and Individual Project will be assessed and evidence of work must be collected for the other aspects.

Currently, if all students complete every aspect of the course to the required standard, then they can achieve the WBQ. It is now graded A\* - E in line with other A level subjects.

<b>Skills Challenge Certificate Components</b>	<b>Weighting</b>	<b>Assessed Skills</b>	<b>Internal Assessment</b>	<b>External Moderation</b>
Individual Project	50%	<ul style="list-style-type: none"><li>• Literacy</li><li>• Numeracy</li><li>• Digital Literacy</li><li>• Planning &amp; Organisation</li><li>• Critical Thinking &amp; Problem Solving</li></ul>	✓	✓
Enterprise and Employability Challenge	20%	<ul style="list-style-type: none"><li>• Numeracy</li><li>• Digital Literacy</li><li>• Creativity &amp; Innovation</li><li>• Personal Effectiveness</li></ul>	✓	✓
Global Citizenship Challenge	15%	<ul style="list-style-type: none"><li>• Literacy</li><li>• Critical Thinking &amp; Problem Solving</li><li>• Creativity &amp; Innovation</li></ul>	✓	✓
Community Challenge	15%	<ul style="list-style-type: none"><li>• Planning &amp; Organisation</li><li>• Personal Effectiveness</li></ul>	✓	✓

The introduction of grading has been broadly welcomed by higher education. The Welsh Baccalaureate is widely recognised by universities and this will not change with the introduction of grading. The university entrance offers given to students will increasingly include grades in the Welsh Baccalaureate Advanced Level alongside grades in other qualifications.

### **Why study the WBQ?**

- If students complete all parts of the course to the required standard it can be worth up to 140 UCAS points (this is equivalent to an A\* grade at A2 level)
- Students will have developed skills over the course that will help them in the future and will have broadened their outlook about various issues that affect them directly in Wales and the world they live in.

For more information visit [www.wbq.org.uk](http://www.wbq.org.uk)

# **SUBJECT INFORMATION**

We have provided in this section an outline of the syllabuses for AS/A2 courses and BTEC (Level 3).

On the next page you will find an overview of the requirements for each subject.

Art	<i>Page 7</i>
Biology	<i>Page 8</i>
Business Studies	<i>Page 9</i>
Chemistry	<i>Page 10</i>
Computer Science	<i>Page 12</i>
Drama	<i>Page 13</i>
DT: Product Design	<i>Page 14</i>
DT: Textiles	<i>Page 15</i>
Economics	<i>Page 16</i>
English Language	<i>Page 17</i>
English Literature	<i>Page 18</i>
Food Science & Nutrition	<i>Page 19</i>
French	<i>Page 20</i>
Geography	<i>Page 21</i>
German	<i>Page 22</i>
Health & Social Care (BTEC Level 3)	<i>Page 23</i>
History	<i>Page 24</i>
ICT	<i>Page 25</i>
Law	<i>Page 26</i>
Mathematics (inc. Further Mathematics)	<i>Page 27</i>
Media Studies	<i>Page 28</i>
Music	<i>Page 29</i>
Performing Arts (BTEC Level 3)	<i>Page 30</i>
Physical Education	<i>Page 31</i>
Physics	<i>Page 32</i>
Politics	<i>Page 33</i>
Psychology	<i>Page 34</i>
Religious Studies	<i>Page 35</i>
Sociology	<i>Page 36</i>
Sport (BTEC Level 3)	<i>Page 37</i>
Welsh	<i>Page 38</i>

AS LEVEL SUBJECT	SUBJECT GRADE REQUIRED AT GCSE	GRADE REQUIRED AT GCSE	
		ENGLISH	MATHS
<b>ART</b>	B	C	-
<b>BIOLOGY</b>	BB – Core & Additional Triple Science B (Biology) CC	C	C
<b>BUSINESS</b>	C	C	C
<b>CHEMISTRY</b>	Science GCSE only no route into A Level. Add. Science BB with a B in Chemistry. Triple Science B (Chemistry) CC	-	C
<b>COMPUTER SCIENCE</b>	B or above in IT or B or above Computing		
<b>DRAMA</b>	Open to all students providing they meet the 6 <sup>th</sup> Form entry requirements	-	-
<b>DT: PRODUCT DESIGN</b>	GCSE C in DT or Art	-	-
<b>DT: TEXTILES</b>	C or GCSE in Art or DT	-	-
<b>ECONOMICS</b>	N/A	C	C
<b>ENGLISH LANGUAGE</b>	B	C in Literature	-
<b>ENGLISH LITERATURE</b>	B	C in Language	-
<b>FOOD SCIENCE &amp; NUTRITION</b>	Suitable for all	-	-
<b>FRENCH</b>	B	-	-
<b>GEOGRAPHY</b>	C (If no GCSE candidate will be considered if B in core subjects)	-	-
<b>GERMAN</b>	C	-	-
<b>HEALTH &amp; SOCIAL CARE (BTEC)</b>	-	-	-
<b>HISTORY</b>	B in GCSE is preferable but not essential – we will consider students on individual merits	C in Literature or Language	-
<b>INFORMATION TECHNOLOGY</b>	C in Full Course	-	-
<b>LAW</b>	-	C	-
<b>MATHEMATICS</b>	B	-	B
<b>MEDIA STUDIES</b>	N/A	C in Literature or Language	-
<b>MUSIC</b>	Ability to read/learn music and perform confidently at Grade 5	-	-
<b>PERFORMING ARTS (BTEC)</b>	An interest in performing	-	-
<b>PHYSICAL EDUCATION</b>	C	-	-
<b>PHYSICS</b>	CC – Core & Additional Triple Science B (Physics) CC	-	B
<b>POLITICS</b>	N/A	C	-
<b>PSYCHOLOGY</b>	C in Science (not BTEC) and GCSE C in a Humanities subject	C in Literature or Language	C in Higher Tier
<b>RELIGIOUS EDUCATION</b>	C	-	-
<b>SOCIOLOGY</b>	N/A	C	-
<b>SPORT (BTEC)</b>	BTEC Level 2 or C GCSE PE	-	-
<b>WELSH</b>	C (Full Course), A (Short Course)	-	-

# **PERSONAL DEVELOPMENT & WELL BEING**

## **INTRODUCTION**

A good Sixth Form education must be more than teaching, learning and personal academic success. We pride ourselves on a strong pastoral system that supports students both academically and socially in the transition from GCSE to A Level. We strive to support students in becoming more independent learners and advise them on how to manage their time effectively to strike a good balance between all their commitments.

## **THE TUTOR SYSTEM**

Regular attendance and punctuality at assemblies and registration/learning tutor interviews are just as important in the Sixth Form as in the lower years of the school. Important information and opportunities are provided by the Leader of Learning 16-19, Assistant Year Team Leader and Learning Tutors at this time.

	Mon	Tues	Wed	Thurs	Fri
Year 12	Assembly	Registration/ Tutor interviews	Assembly	Sign in / Tutor interviews	Registration
Year 13	Registration UCAS and Tutor interviews	Assembly	Registration UCAS and Tutor interviews	Sign in / Tutor interviews	Sign in / Tutor interviews

**Year 12:** All students must be in school at 8.30 am Monday – Friday. Students sign in prior to their 1<sup>st</sup> lesson of the day on a Thursday.

**Year 13:** Students must be in school at 8.30 am Monday – Wednesday. Students sign in prior to their 1<sup>st</sup> lesson of the day Thursday and Friday. This allows flexibility in organising their independent study and develops time management skills.

## **Learning Tutors**

Your Learning Tutor is one of the most important members of staff during your time in the Sixth Form. He/she helps you to cope with the demands of Sixth Form life. During these sessions you will discuss your progress and targets set for chosen subjects, WBQ and in Year 13 complete your university or employment reference. Therefore it is essential to establish a positive rapport with your tutor. You will have a 30 minute half termly one-to-one interview with your learning tutor throughout your time in the Sixth Form.

## **Sixth Form Team**

The Sixth Form Team are based in offices in the Sixth Form Private Study Area (PSA) and operate an open door policy to support students with any academic or social concerns they may have. In addition, the school counsellor provides excellent support for students who require further emotional support or guidance. Careers Wales are also based in an office in the PSA.

## **SIXTH FORM FACILITIES**

The Sixth Form PSA provides an excellent base for students to complete their academic studies. There are ample PCs and laptops, access to Wi-Fi, an area for assemblies and presentations from outside speakers and a base for the Sixth Form Administrator Mrs Jones.

The Sixth Form Common Room provides a wonderful space for relaxation and recreational activities. In addition the students have their own café, which is open all day for healthy snacks, meals and refreshments.



## **UCAS AND PLANNING YOUR FUTURE**

We pride ourselves in giving students all the necessary information and experiences to help make clear and informed decisions on their future after Sixth Form. Active planning helps to motivate students to make the most of all opportunities presented to them whilst at school. We actively encourage students to complete relevant activities and work experience in order to maximise their chances of gaining places at the most competitive establishments, such as Oxford and Cambridge and the Russell Group universities.

**CAREERS ADVICE** - every Sixth Form student is encouraged to have a careers interview in Year 12 with our professional careers advisor. Careers Wales provide an excellent service to our students on careers, apprenticeships and part-time and full time employment opportunities.

**HIGHER EDUCATION** - we follow a stage by stage process for higher education applicants. Each year the vast majority of our Year 13 students enter higher education.

Stage 1 - All Year 12 students attend the UCAS Higher Education Convention in the spring term at Cardiff Metropolitan University. This provides a very good starting point for students to research higher education opportunities. It should be pointed out; however, that potential Oxbridge students and students considering careers such as Medicine, Veterinary Science and Dentistry will start the preparation process from the beginning of Year 12 through the Honours Programme.

Stage 2 - Following this visit and after listening to presentations from various universities, students undertake research into their higher education choices over the remainder of the summer term. Open Day visits are highly recommended to make informed Higher Education decisions.

Stage 3 - Year 13 students complete and send their UCAS applications between September and January. Every student will meet with the Leader of Learning 16-19 who will check and send off the final application. Prior to this students work very closely with their learning tutors, culminating in the learning tutor writing the final UCAS reference after the student has registered and completed the application form on line. You receive a copy of the reference as we follow an 'open reference' policy. Over this time the Leader of Learning 16-19 provides a series of talks on Higher Education decisions, interview techniques and student finance.

Stage 4 - In the spring term in Year 13 students make decisions on university offers.

Stage 5 - In the summer term university advisers come to talk to Year 13 about life in university in the first year. This provides invaluable advice on starting university - it can save a lot of headaches later on!

Stage 6 - In August 'A' level results are published. The school provides advice to students, including to those who do not achieve the required grades.

# **YOUR TRANSITION FROM YEAR 11 INTO YEAR 12**

## **WHAT HAPPENS NOW?**

### **PERSONAL INTERVIEW:**

Every applicant is interviewed by the Senior Leadership Team – to discuss their current attendance and attitude to studies and how these could affect their future plans and other issues relating to the Sixth Form.

Research courses of choice using this prospectus and attend Year 11-12 Learning Pathways Evening – Tuesday 1<sup>st</sup> December 2016, 6:00 pm, East Wing Hall for main introduction to the evening. 6:30 – 7:30 pm – subject specific talks/information.

### **CONSIDER YOUR OPTIONS:**

Make informed subject choices after collection of your GCSE results on Thursday, 25<sup>th</sup> August 2016.

### **SIXTH FORM REGISTRATION DAY: (USUALLY THE DAY AFTER GCSE RESULTS) – FRIDAY 26<sup>th</sup> AUGUST 2016**

You will receive guidance to make your final selection of subjects and officially register to join the Sixth Form. A letter outlining times and details will follow.

### **FIRST DAY OF TERM:**

**Friday 2<sup>nd</sup> SEPTEMBER 2016 (this date is subject to change please check closer to the time)**  
– Independent Learner Day – ‘Skills Day’ in preparation for Sixth Form studies.

## **KEY DATES/EVENTS IN 2016/2017**

### **YEAR 12**

GCSE RESULTS DAY:	<i>Thursday, 25<sup>th</sup> August 2016</i>
REGISTRATION DAY:	<i>Friday, 26<sup>th</sup> August 2016</i>
FIRST DAY/INDEPENDENT LEARNER DAY:	<i>Friday, 2<sup>nd</sup> September 2016</i>
PROGRESS REVIEW:	<i>October &amp; February</i>
NEW SENIOR PREFECTS ELECTED:	<i>December 2016</i>
GCSE CERTIFICATES PRESENTATION:	<i>December 2016</i>
GCSE RESULTS RESULTS:	<i>January 2017</i>
MOCK EXAMS	<i>January 2017</i>
YEAR 12 REPORTS ISSUED:	<i>March 2017</i>
YEAR 12 PARENTS EVENING:	<i>March 2017</i>
UCAS HIGHER EDUCATION CONVENTION:	<i>March 2017</i>
AS EXAMS:	<i>May-June 2017</i>
AS LEVEL RESULTS:	<i>August 2017</i>
INTEGRATION:	<i>October 2016</i>
CHRISTMAS BALL:	<i>December 2016</i>

### **YEAR 13**

HIGHER EDUCATION APPLICATIONS:	<i>1<sup>st</sup> Sept 2016-15th Jan 2017</i>
YEAR 13 REPORTS ISSUED:	<i>November 2016</i>
YEAR 13 PARENTS' EVENING:	<i>November 2016</i>
MOCK EXAMS	<i>January 2017</i>
FINAL A LEVEL EXAMS:	<i>May-June 2017</i>
YEAR 13 LEAVERS' DINNER:	<i>June 2017</i>
A LEVEL RESULTS:	<i>August 2017</i>